

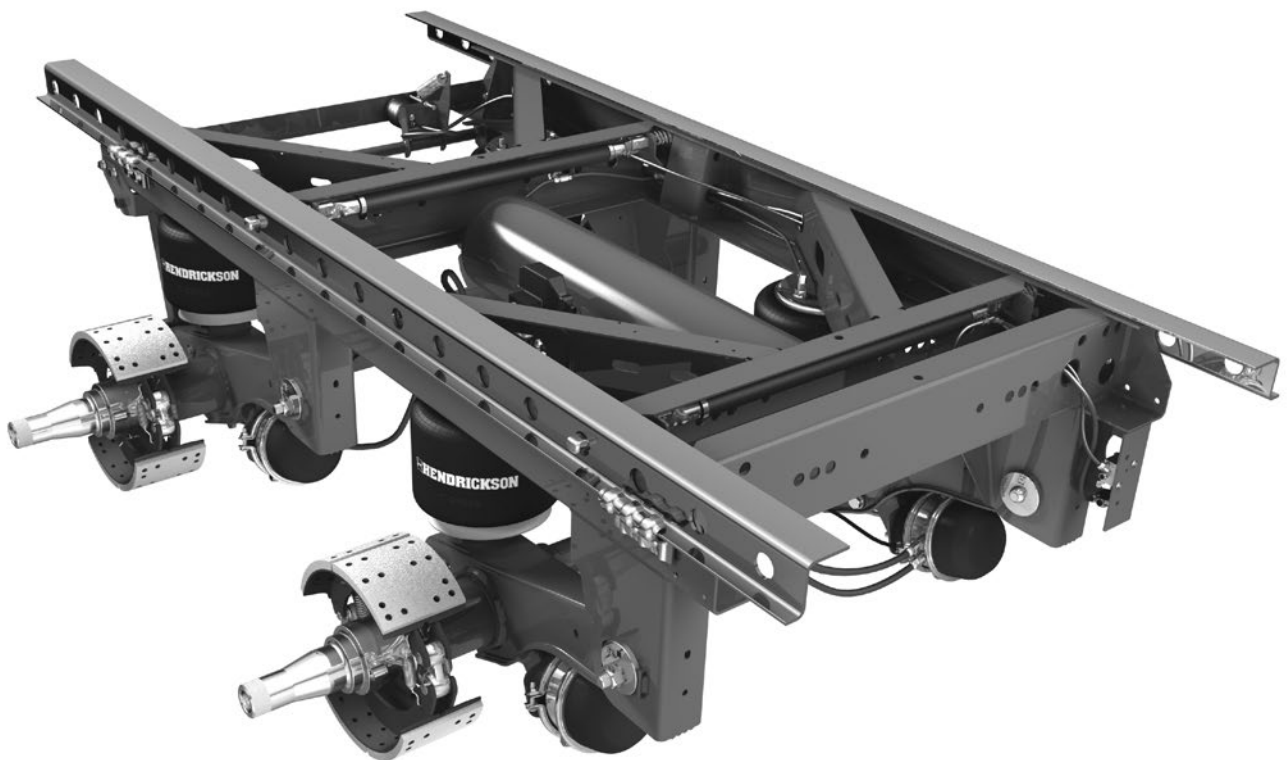
PARTS LIST

VANTRAX[®] HKANT 40K/
HKA180

LIT NO: L649

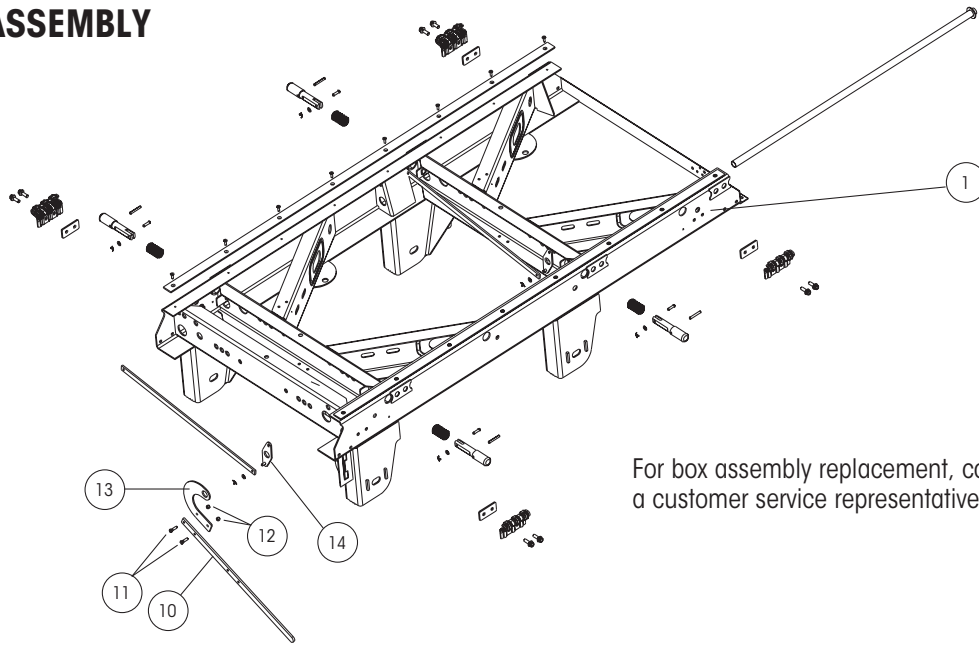
DATE: July 2015

REVISION: D



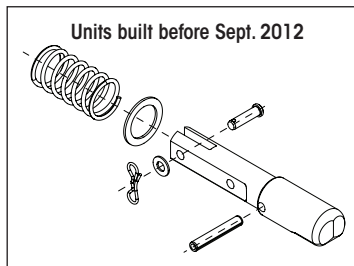
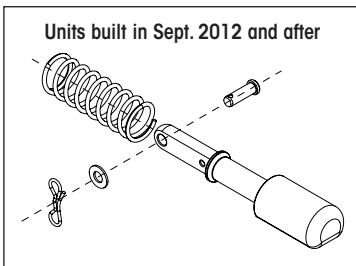


SLIDER BOX ASSEMBLY

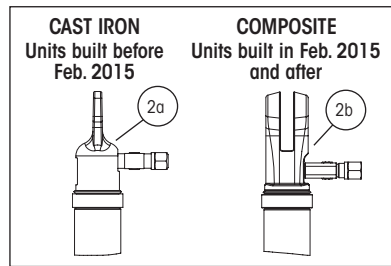


For box assembly replacement, contact a customer service representative.

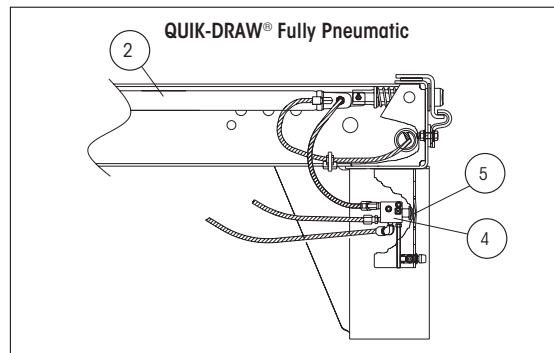
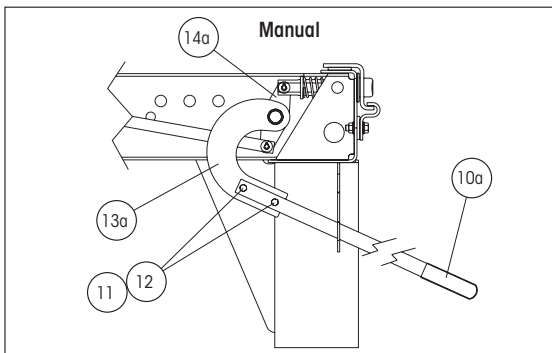
SLIDER PINS



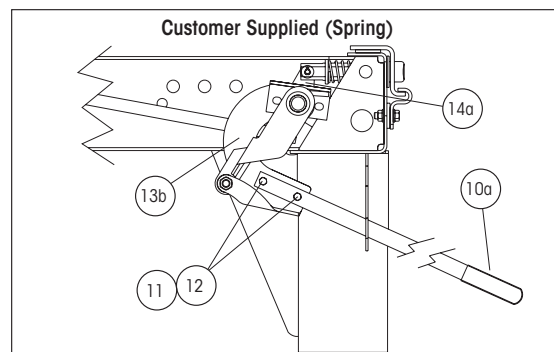
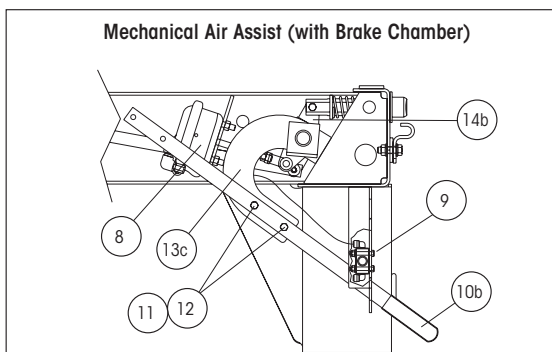
QUIK-DRAW® ACTUATOR ENDS



RELEASE MECHANISMS



NO LONGER AVAILABLE ON PRODUCTION MODELS OR BOX REPLACEMENTS — PARTS FOR THESE MECHANISMS ARE STILL AVAILABLE



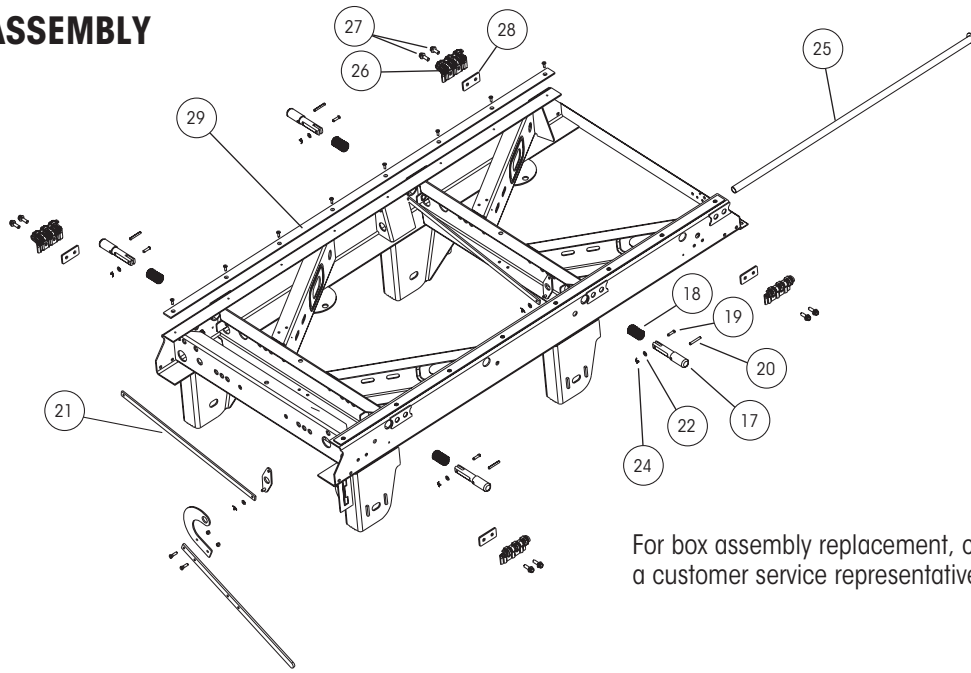
**SLIDER BOX ASSEMBLY**

ITEM	DESCRIPTION	PART NO.	SYSTEM QTY.	NOTE
1	AFTERMARKET SLIDER BOX REPLACEMENT	AMBOX.###	1	Contact Hendrickson for assistance
2	QUIK-DRAW® PNEUMATIC PIN-PULL MECHANISM			
	2a Cast Iron (Units built before Feb. 2015)			
	Front linear actuator with fittings, 42" box	S-28061-1	1	
	Rear linear actuator with fittings, 42" box	S-28062-1	1	
	Front linear actuator with fittings, 48" and 54" box	S-28061-2	1	Also order pin extension for 54" box
	Rear linear actuator with fittings, 48" and 54" box	S-28062-2	1	Also order pin extension for 54" box
	2b Composite (Units built in Feb. 2015 and after)			
	Front linear actuator with fittings, 42" box	S-35294-1	1	Includes clevis pin
	Rear linear actuator with fittings, 42" box	S-35294-1	1	Includes clevis pin
	Front linear actuator with fittings, 48" and 54" box	S-35295-2	1	Includes clevis pin
	Rear linear actuator with fittings, 48" and 54" box	S-35295-2	1	Includes clevis pin
3	PIN EXTENSION 54" BOX WIDTH (Not shown)	S-27836	4	54" box is used with wide base tires
4	QUIK-DRAW VALVE			
	Three-way auto reset valve	VS-25223	1	
	Three-way auto reset valve assembly with fittings	VS-25224	1	
5	QUIK-DRAW VALVE KNOB with SET SCREW	VS-25849	1	
6	QUIK-DRAW VALVE SPACER (Not shown)	B-25284	1	
7	QUIK-DRAW RETROFIT KIT (Not shown)			
	42" box width	D-25430-2	1	Includes actuators, valve, plumbing hardware and instructions
	48" box width	D-25430-8	1	Same as above
	54" box width	D-25430-4	1	
8	BRAKE CHAMBER MECHANICAL AIR ASSIST	A-23039	1	Type 12 modified
9	AIR VALVE MECHANICAL AIR ASSIST	VS-23224	1	Air valve with fittings
10	HANDLE ASSEMBLY			
	10a Manual and customer supplied	S-25592	1	Handle and grip assembly
	10b Mechanical air assist	B-22923	1	Handle only
11	HANDLE BOLT	SA-1100-10	2	2-3/8"-16 x 1-1/4" hex head bolt Grade 5
12	HANDLE NUT	SA-9000-5	2	2-3/8"-16 lock nut, grade B
13	HANDLE MOUNT			
	13a Manual	C-21275	1	
	13b Customer supplied	S-23534	1	
	13c Mechanical air assist	C-23231	1	
14	CRANK ARM WELDMENT			
	14a Manual and customer supplied	B-33010	2	For front and rear of slider box
	14b Mechanical air assist	B-33010	1	For rear of slider box
15	CRANK ARM PLATE; MECHANICAL AIR ASSIST (Not shown)	B-23025	1	
16	CRANK ARM BOLT KIT (Not shown)	A-22041	1	Includes bolt, flat washer, lock washer and nut

Note: Identification can be found on the roadside slider box rail above the front frame bracket there will also be a blank VANTRAX tag on the inside of the curbside beam

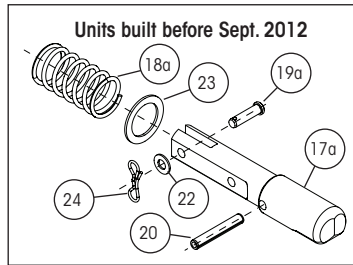
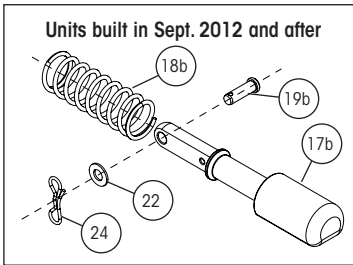


SLIDER BOX ASSEMBLY

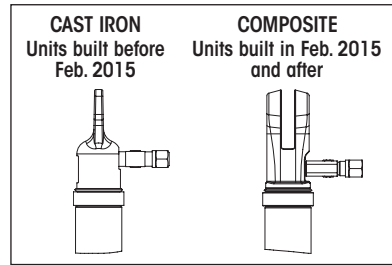


For box assembly replacement, contact a customer service representative.

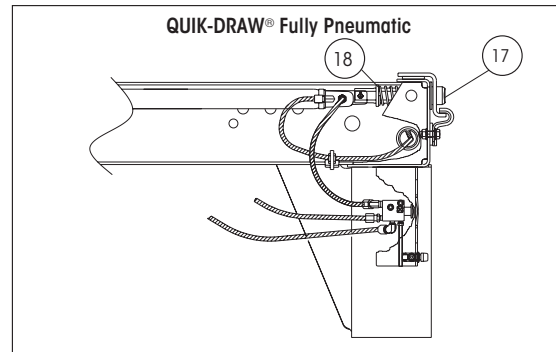
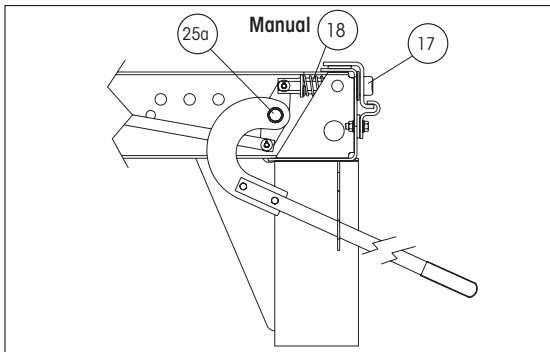
SLIDER PINS



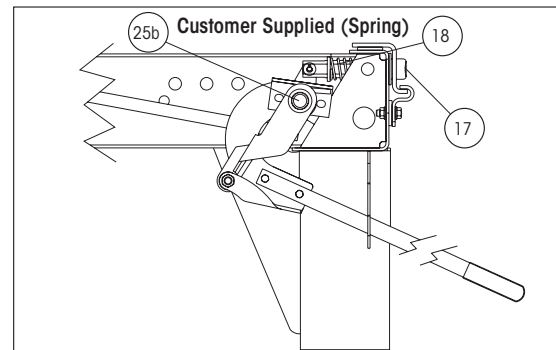
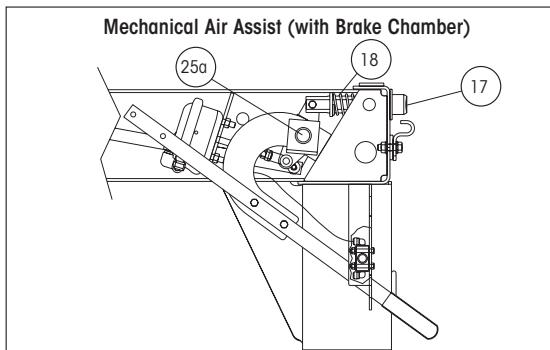
QUIK-DRAW® ACTUATOR ENDS



RELEASE MECHANISMS



NO LONGER AVAILABLE ON PRODUCTION MODELS OR BOX REPLACEMENTS — PARTS FOR THESE MECHANISMS ARE STILL AVAILABLE





VANTRAAX® HKANT 40K / HKA180 PARTS LIST

ITEM	DESCRIPTION	PART NO.	SYSTEM QTY.	NOTE
17a	LOCKING PIN (Units built before Sept. 2012)			
	1.375" diameter pin	S-28290	4	4" body rail hole spacing (TTMA)
	1.375" diameter pin	S-28290	4	6" body rail hole spacing
	1.625" diameter pin	S-28289	4	4" body rail hole spacing
17b	LOCKING PIN (Units built in Sept. 2012 and after)			
	1.375" diameter pin	S-32389	4	4" body rail hole spacing (TTMA)
	1.375" diameter pin	S-32389	4	6" body rail hole spacing
	1.625" diameter pin	S-32388	4	4" body rail hole spacing
18a	LOCKING PIN SPRING (Units built before Sept. 2012)			
	42" box width with manual and mechanical air assist			
	48" box width with manual, QUIK-DRAW® and mechanical air assist	B-28930	4	3.25" spring
	42" box width with QUIK-DRAW			
	42" and 48" box width with customer supplied spring mechanism	B-22000	4	3.8" spring
18b	LOCKING PIN SPRING (Units built in Sept. 2012 and after)			
	42", 48" and 54" box with QUIK-DRAW	B-32500	4	4.5" spring
19a	CLEVIS PIN (Units built before Sept. 2012)	SA-5200-6	4	3/8" x 1-3/8"
19b	CLEVIS PIN (Units built in Sept. 2012 and after)			
	Cast iron end	SA-5200-8	4	3/8" x 1.16"
	Composite end	SA-5200-10	4	3/8" x 1.82"
20	SPRING PIN (Units built before Sept. 2012)	SA-8100-4	4	3/8" x 2-1/2" roll pin
21	LOCKING PIN LINK			
	42" box	S-32967-1	2	
	48" box	S-32967-2	2	
	54" box	S-32967-3	2	
22	LOCKING PIN WASHER	SA-1500-2	6	3/8" I.D. flat washer
23	PIN WASHER (Units built before Sept. 2012)	S-30641-1	1	
24	LOCKING PIN LINK COTTER PIN	SA-1700-12	6	3/32" x 1" cotter pin
25	PIPE WELDMENT			
	25a Manual and mechanical air assist	S-21433	1	
	25b Customer supplied	S-21433-1	1	
26	BODY RAIL CLIP			
	3.4" clip height	S-24459	4	Use with 4" hole centers and 1.625" locking pin
	3.8" clip height	S-24460	4	Use with 6" hole centers and 1.375" locking pin
27	BODY RAIL BOLT	SA-6900-2	8	1/2"-13" x 1-1/2" flanged bolt
28	BODY RAIL CLIP SPACER			
	1.5" clip hole centers	A-21282	4	
	2" clip hole centers	A-22367	4	
29	SLIDER WEAR PAD KIT	S-14342-3	2	Includes (1) slider wear pad and (8) screws



SUSPENSION ASSEMBLIES

Frame Bracket Assembly

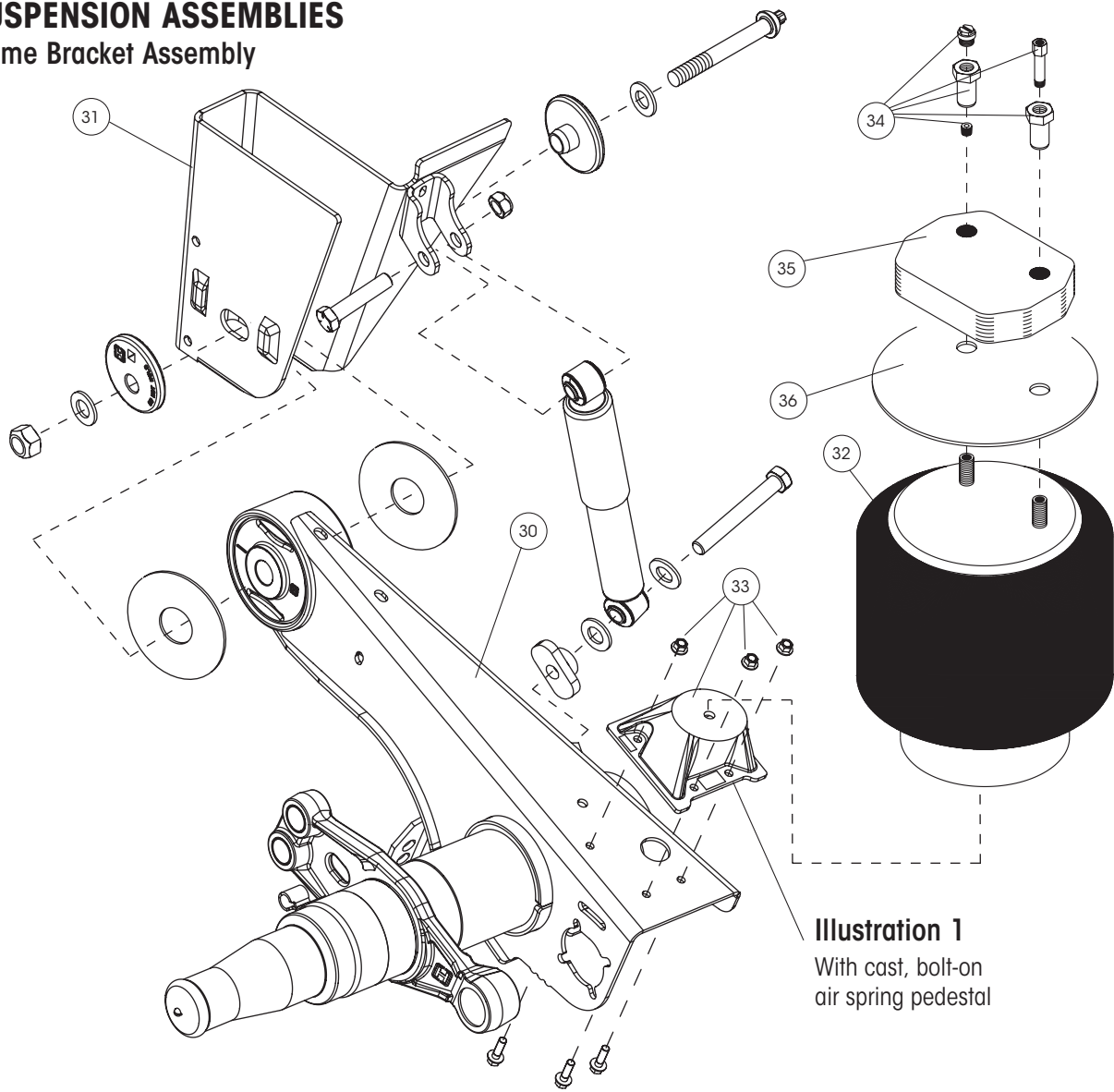


Illustration 1
With cast, bolt-on
air spring pedestal

Manufactured Late August 2002 Through 2008

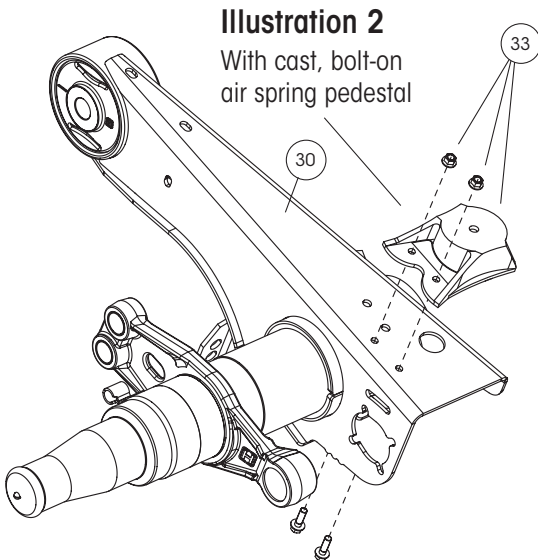


Illustration 2
With cast, bolt-on
air spring pedestal

Manufactured 2001 Through 2002

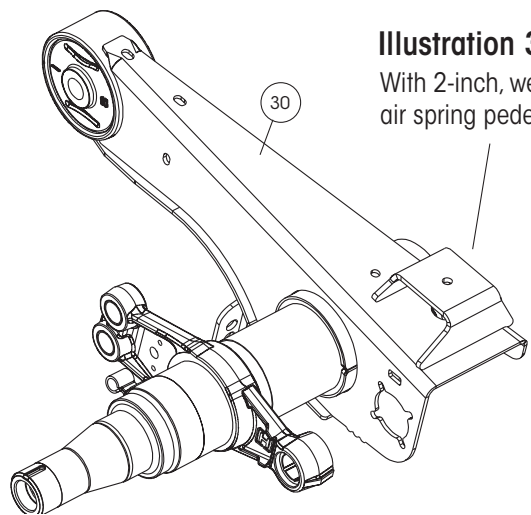


Illustration 3
With 2-inch, weld-on
air spring pedestal

**SUSPENSION ASSEMBLIES**

ITEM	DESCRIPTION	PART NO.	SYSTEM QTY.	NOTE
30	HALF-TRAAX AXLE/BEAM WELDMENT	HTRAAX.###	2	Contact Hendrickson for assistance
31	FRAME BRACKET ASSEMBLY - NARROW BEAM			
	14" ride heights			
	Roadside	S-28531-1L	2	
	Curbside	S-28531-1R	2	
	15" – 17" ride heights			
	Roadside	S-32194-2L	2	
	Curbside	S-32194-2R	2	
	18" – 19" ride heights			
	Roadside	S-28531-3L	2	
	Curbside	S-28531-3R	2	
32	AIR SPRING			
	Shipped prior to January 2008	S-22948	4	Replaces C-22948 and C-21966 16" ride height and above
	Shipped after January 2008	S-28929	4	
33	CAST AIR SPRING PEDESTAL KIT ¹ - When model includes a cast, bolt-on pedestal under the air spring. (Illustration 1 and 2)			Includes left and right side pedestals and fasteners
		S-27447-1	2	16" ride height with 2" pedestal
		S-27447-2	2	16.5" ride height with 2.57" pedestal
		S-27447-3	2	14" and 17" ride heights with 3.17" pedestal
		S-27447-4	2	15", 15.5", 18" and 19" ride heights with 3.91" pedestal
34	AIR SPRING MOUNTING KIT (per air spring)			
	WITH 2" WELD-ON AIR SPRING PEDESTAL - When model includes a 2" weld-on pedestal under the air spring. (Illustration 3)			
		S-22635/2	4	14" and 18" ride heights
		S-22631/2	4	15" and 19" ride heights
		S-22632/2	4	15.5" ride height
		S-22619/2	4	16", 16.5" and 17" ride heights
	WITH CAST AIR SPRING PEDESTAL - When model includes a cast, bolt-on pedestal under the air spring. (Illustration 1 and 2)			
		S-22619/2	4	14"-18" ride heights
		S-22630/2	4	19" ride height
35	AIR SPRING SPACER			
	WITH 2" WELD-ON AIR SPRING PEDESTAL - When model includes a 2" weld-on pedestal under the air spring. (Illustration 3)			
		B-22510-4	4	14" and 16.5" ride heights 3/4" thick spacer
		B-22510-2	4	15.5" ride height
		B-22510-4	4	Requires both the 3/4" and 1-7/8" spacer
		B-22510-2	4	15" and 18" ride heights 1-7/8" thick spacer
		B-22510-1	4	17" ride height 1-1/8" thick spacer
		B-22510-3	4	19" ride height 3-1/8" thick spacer
	WITH CAST AIR SPRING PEDESTAL - When model includes a cast, bolt-on pedestal under the air spring. (Illustration 1 and 2)			
		B-22510-1	4	19" ride height 1-1/8" thick spacer
36	AIR SPRING MOUNTING PLATE	S-27042	4	15.5" ride height

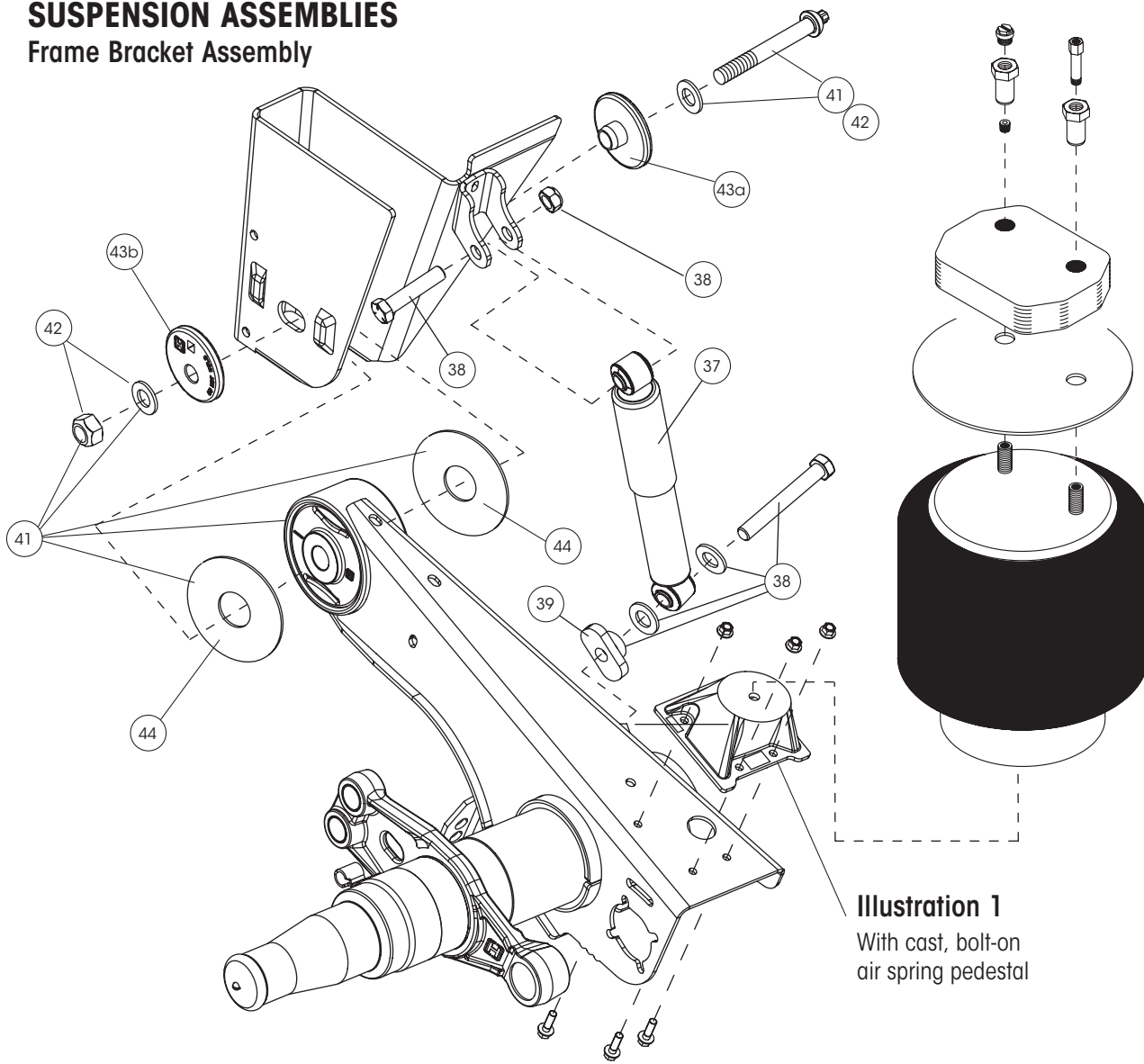
1. The 3-bolt pedestal (Illustration 1) replaces the 2-bolt pedestal (Illustration 2). Drilling instructions are provided by Hendrickson.

Note: Identification can be found on the roadside slider box rail above the front frame bracket there will also be a blank VANTRAAX tag on the inside of the curbside beam.

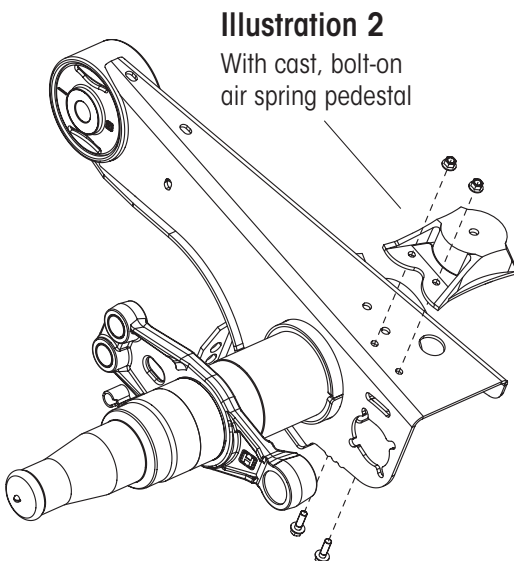


SUSPENSION ASSEMBLIES

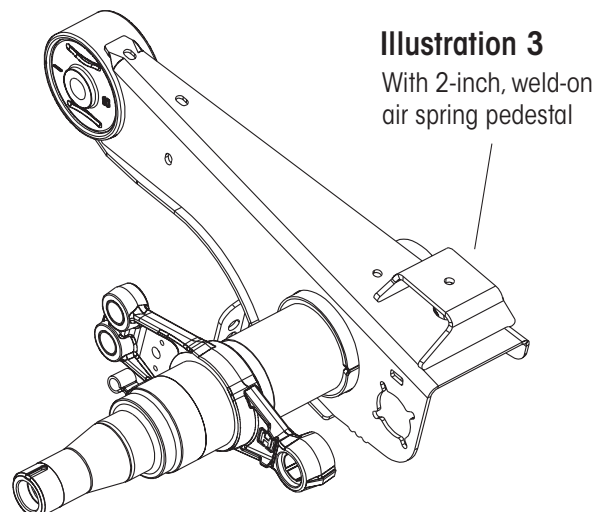
Frame Bracket Assembly



Manufactured Late August 2002 Through 2008



Manufactured 2001 Through 2002



**SUSPENSION ASSEMBLIES**

ITEM	DESCRIPTION	PART NO.	SYSTEM QTY.	NOTE
37	SHOCK ABSORBER	S-24088	4	
38	SHOCK BOLT KIT	S-24049/2	4	Includes shear bolt, spacer, washers, hex bolt and hex nut
39	SHOCK SPACER	S-27196	4	
40	SHOCK STRAP KIT (Not shown)	C-23086-1	4	Includes (2) strap, (2) clevis and (4) ties
41	TRI-FUNCTIONAL® PIVOT BUSHING KIT ²	S-26321	2	Includes (2) bushings, (2) pivot bolt kits, (4) bushing tube spacers and lubricant pack
42	QUIK-ALIGN® PIVOT BOLT KIT	S-24705	4	Contains 7" bolt, nut and hardened washers
43	QUIK-ALIGN ALIGNMENT COLLARS			
	43a Concentric (inner)	S-20924	4	Pivot bolt hole is centered
	43b Eccentric (outer)	S-20925	4	Pivot bolt hole is offset from center
44	BUSHING TUBE SPACER			
	Units shipped before Aug. 1, 2002		8	Inner metal outer diameter dimension of TRI-FUNCTIONAL® Bushing is 2.2"; Inner hole dimension of BTS 2.38"
	Units shipped after Aug. 1, 2002	S-26807	8	Inner metal outer diameter dimension of TRI-FUNCTIONAL Bushing is 2.6"; Inner hole dimension of BTS 2.95"
45	NON-DELAY HEIGHT CONTROL VALVE (Not shown)	VS-227	1	All applications

2. Bushing tool S-24736 is required to correctly rebush the suspension

Note: Identification can be found on the roadside slider box rail above the front frame bracket there will also be a blank VANTRAAX tag on the inside of the curbside beam



NOTES

20 horizontal lines for notes.

Call your trailer dealer or Hendrickson at **330.489.0045** or **866.RIDEAIR (743.3247)** for additional information.



www.hendrickson-intl.com

TRAILER COMMERCIAL VEHICLE SYSTEMS

2070 Industrial Place SE
Canton, OH 44707-2641 USA
866.RIDEAIR (743.3247)
330.489.0045 • Fax 800.696.4416

Hendrickson Canada

250 Chrysler Drive, Unit #3
Brampton, ON Canada L6S 6B6
800.668.5360
905.789.1030 • Fax 905.789.1033

Hendrickson Mexicana

Circuito El Marqués Sur #29
Parque Industrial El Marqués
Pob. El Colorado, Municipio El Marqués,
Querétaro, México C.P. 76246
+52 (442) 296.3600 • Fax +52 (442) 296.3601